

Sunil Patil

YASHMAN TWIN BUNGALOW (2007)

17

'Yashman' is a twin bungalow designed with a vernacular twist, gives a glimpse into what could very well be paradise on earth. Designed for brothers, Farmers and land movers by profession, this house is the perfect answer to their request for two households rolled into one. The main feature of the house is the landscape, which incorporates a stunning cascade, seamlessly fusing what is man-made and that which is God made.



interaction

The connecting lobby between the bungalows has the parking below it at ground level and at the upper level creates a common space for interaction. It also connects to the garden at in the backyard. The giant water cascade is the focal point of the garden. The water body is surrounded by the bedrooms and family spaces.

The courtyards and the connecting lobby have skylights so glare free sunlight pours in to create different moods through the day. The view from the dining space is the garden and walkouts. The houses boast composite stone masonry, the brick and stone insulating it from the hot Kolhapur summers. The masonry stone is violet and in contrast to the grey roof. Openings in various areas allow for natural ventilation so there is no need for air conditioning.

Solar panels dot the roof and a water harvesting system collects and stores rain water to recharge the bore-well.



*Facing page bottom: A delicate balance between rocks, shrubs, pebbles and water has been achieved in the courtyard space.
Bottom: A view of the bungalow south façade as it faces the setting sun.*





*Top: A view of the connecting lobby lit by diffused sunlight.
Facing page top & bottom: The family space of the right wing looks onto the courtyard.
Next page: A view of the courtyard as seen in the left wing.*

PRINCIPAL ARCHITECT

Sunil Patil

EDUCATION

B. Arch

BUILT-UP AREA

10157 sft

FIRM NAME

Sunil Patil & Associates

TEAM SIZE

22 people

ADDRESS

8E Third Floor, Millenium, Sona Park, Tarabai Park, Kolhapur 416003

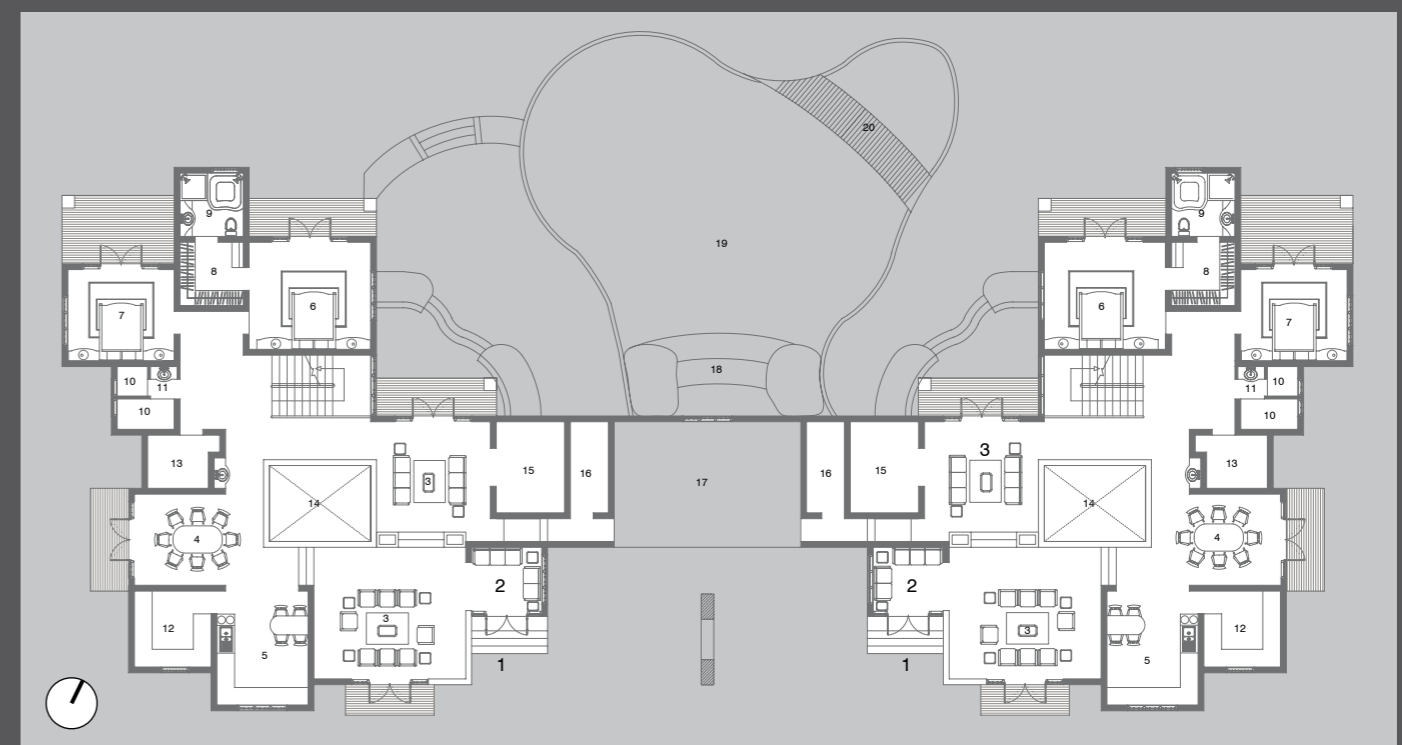
CONTACT / WEBSITE

Tel: +91 231 3292 602 / 603 / 604
www.architectsunilpatil.com



FRONT ELEVATION

- LEGEND**
1. ENTRANCE COURT
 2. WAITING
 3. LIVING SPACE
 4. DINING ROOM
 5. KITCHEN
 6. MASTER BEDROOM
 7. BEDROOM
 8. WALKIN
 9. TOILET
 10. COMMON TOILET
 11. WASH BASIN
 12. STORE
 13. UTILITY ROOM
 14. COURTYARD
 15. POOJA GHAR
 16. GARAGE STORE
 17. PARKING
 18. CASCADE
 19. WATERBODY
 20. BRIDGE



GROUND LEVEL PLAN

PRODUCTS / VENDORS

Glass: *Asahi Glass*
Sanitaryware / Fittings: *Hindware, Jaquar*
Flooring: *RAK*
Lighting: *Polycab wires, Legrand switches, Phillips fixtures*
Paint: *Asian Paints*

CONSULTANTS / CONTRACTORS

Structural: *Parshant A Hadkar*
Electrical: *Uday Electricals*
Civil: *Mahavir Muke*
Landscape: *SPA / Deepak M Patil*

Sunil Patil

YATIN SHAH RESIDENCE (2008)

18

This residence is designed for an industrialist couple with a natural flair for being painters. The design concept is very simple - a wall which runs from the front compound wall to the back compound wall and divides the space into two zones. The wall is conceived as the panel for the exhibition of their paintings.



the wall & the whites

The wall allows for interactions between the spaces on both sides through well- designed openings. The varied spaces consist of common areas like the living and dining spaces. The kitchen is on one side and the private areas like master bedroom and studio on the other side. The studio can be converted into Guest Bed room, allowing the multiple use of space.

The space flows in and out into the nature through various walkouts and openings from the living, dining and bed areas. A small tree with a skylight over it with a platform at its base, inspired by the traditional par provides a perfect sitting place for the bar and dining area.

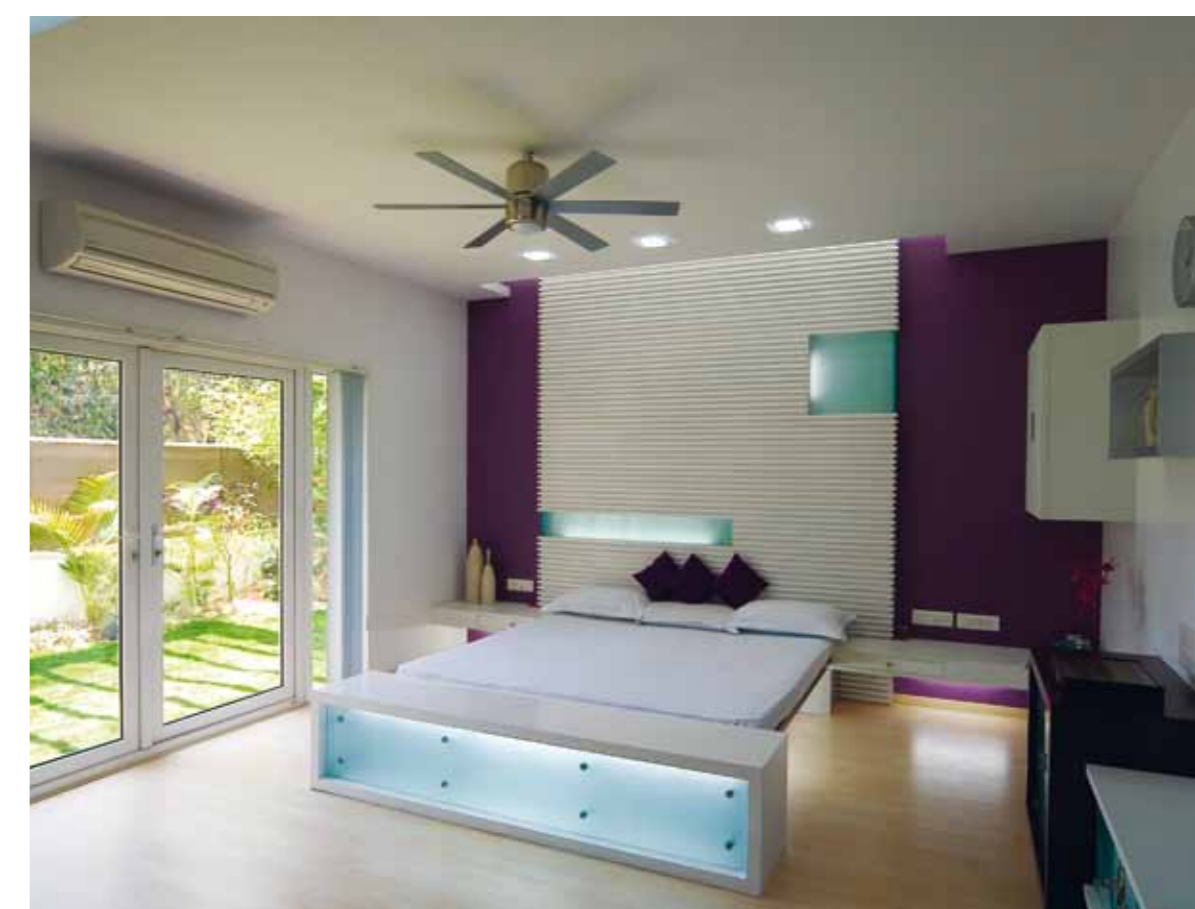
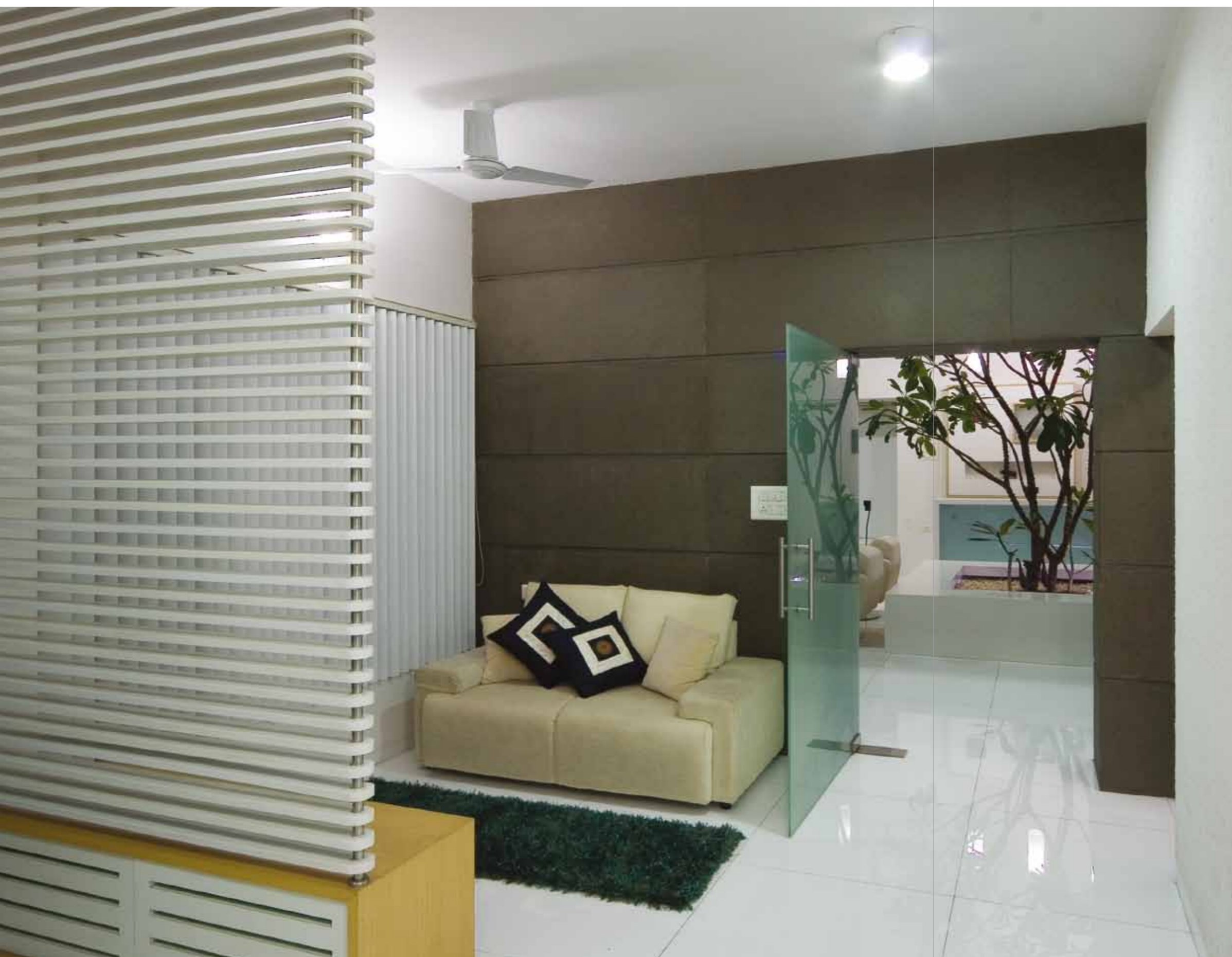
The house is energy efficient and eco-friendly and minimizes the dependency on air conditioning.

Bottom: A night-time view of the dining space lit up by LED lights.

Facing page top: A view of the living and dining space as seen from the living room.

Facing page bottom: A view of the living space as seen from the living room.





Top: A view of the studio cum guest bedroom.
Bottom: A view of the master bedroom as it opens onto the greenery beyond.
Facing page: A view of the waiting area.



PRINCIPAL ARCHITECT

Sunil Patil

BUILT-UP AREA

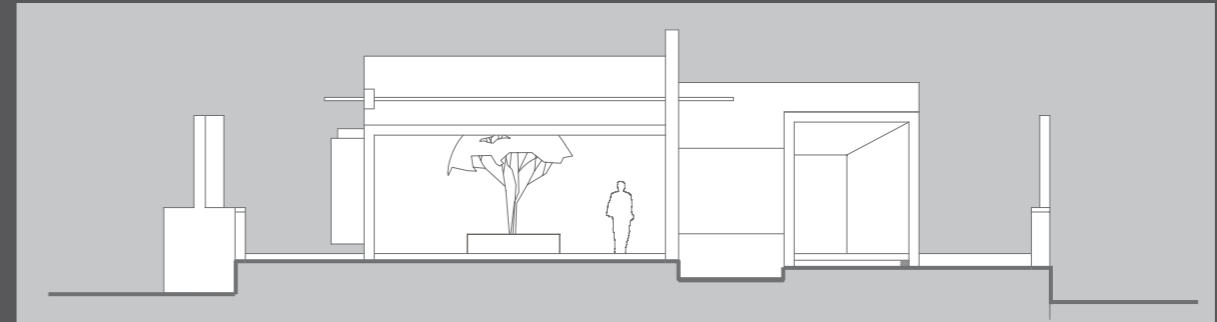
2259 sft

AWARDS

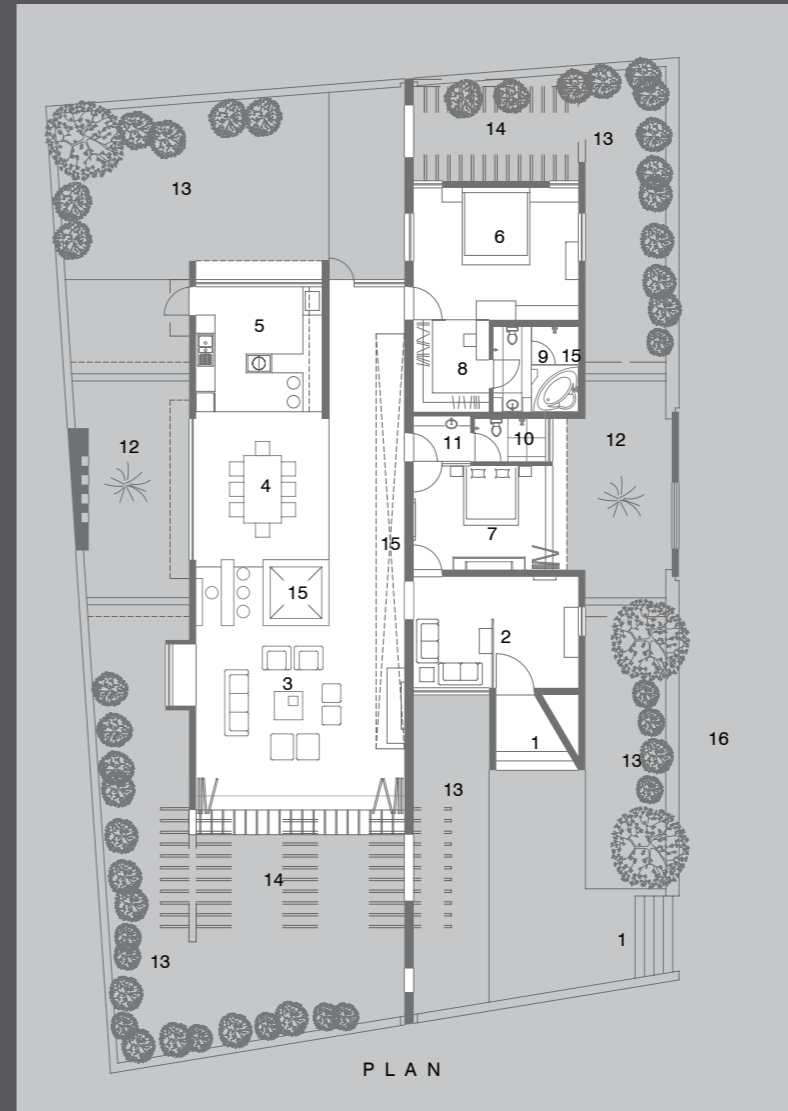
IIID -MK Award 2008,
Category: Interior + Architectural
Interiors – National Award



Need a descriptive caption here



FRONT ELEVATION



GROUND LEVEL PLAN

LEGEND

- 1. ENTRANCE
- 2. WAITING
- 3. LIVING SPACE
- 4. DINING
- 5. KITCHEN
- 6. MASTER BEDROOM
- 7. GUEST BEDROOM
- 8. MASTER CHANGING
- 9. MASTER TOILET
- 10. COMMON TOILET
- 11. WASH BASIN
- 12. WATER BODY
- 13. LAWN
- 14. PEROLA ABOVE
- 15. CUT OUT IN SLAB ABOVE
- 16. PARKING

PRODUCTS / VENDORS

Glass: *Asahi Glass*
Sanitary ware / Fittings: *Jaquar, Hindware*
Flooring: *Nitco*
Furniture: *Stanley*
Lighting: *Finolex wire, Legrand switches*
Paint: *Asian Paints*

CONSULTANTS / CONTRACTORS

Structural: *Prashant S Hadkar*
Electrical: *Uday Electricals*
Civil: *Javed Shaikh*
Landscape: *C D Jitkar*